



## 1. Information on ATMOX Power Supply

- The Power Supply has 150 Watts and can power ATMOX DC Fans. The maximum number of fans will depend on the watts of each fan. See details on each fan on ATMOX DC-Powered Fan Specification Sheet.
- The Power Supply will provide continuous power to the fans connected unless the Power Supply is triggered to come on and off with some other trigger, such as a timer or thermostat.

The following items will be needed (They can be purchased from ATMOX.)

- **14 Gauge** Landscape lightning **cables** (Low voltage cable). The length needed depends on size of your house and number of fans installed. These low voltage cables are normally found in the hardware section where landscaping lights are sold.

Note: There is a **limit** to how far DC current will travel without a considerable loss in voltage. If the circuit is more than 100 ft long we recommend splitting it into a “Y” configuration.

## 2. Installing the Fans

### 2.1 Safety Instructions:

The fans are designed for **residential use only**. **Do not use to exhaust or intake hazardous or explosive materials or vapors**. When you service and clean the fans make sure the fans are disconnected.

### 2.2 Low Voltage Connections of the fans

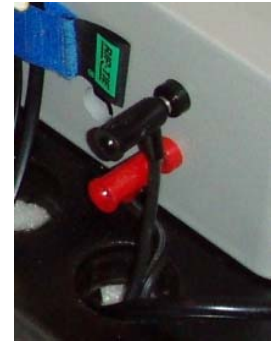
The wiring for connecting the fans is generally run through the crawlspace or attic. For some applications, it may be necessary to run wiring outside. The low voltage cable can be run outside if needed. However, the power supply itself and all fan connections should be inside the crawlspace or attic.

### 2.3 Steps for hooking up fans to low voltage cable

1. Use a low voltage 14 gauge cable.
2. Connect the red and black banana plugs to the end of the cable
  - a. On one end of wire, pull the two strips apart about 2-3 inches down.
  - b. Strip the ends of the wire to prepare them for banana plugs.
  - c. From the cable, select the wire with the grooves on the side. Use this as the negative (-) side. Mount the black banana plug on this side.
  - d. Use the cable with the markings (----) as the positive (+) side. Mount the red banana plug on this side.
  - e. The banana plugs mount by inserting the cable and then tightening the screw on the back until it holds tight.



- f. If you purchase cable on your own and the markings are different, it doesn't matter as long as you are consistent with a positive and negative side.
- g. The jacks for the banana clips are color-coded on the power supply. They should only be connected AFTER the wires are all hooked up to the fans.



3. Inside the crawlspace or attic begin pulling the wire around to all the locations where the fans will be located. To keep the wire out of the way and off the ground, staple the wire or use nailing clips to secure the wire to the joists. Leave extra slack at each fan location to work with the cable.

4. At the fan location, separate/split the 14 gauge cable in the middle for about 6 inches. Use a knife to split the wire.



5. Take the fan wire that is provided. **The wires are already prepped and should not be cut off.** If you do cut the wires, then you will need to strip 1 inch of wire insulation from fan connector wire and twist copper back onto itself over the insulation on each side. This is important to make sure that there will be a proper connection.

6. Mount the yellow banana clips (provided).

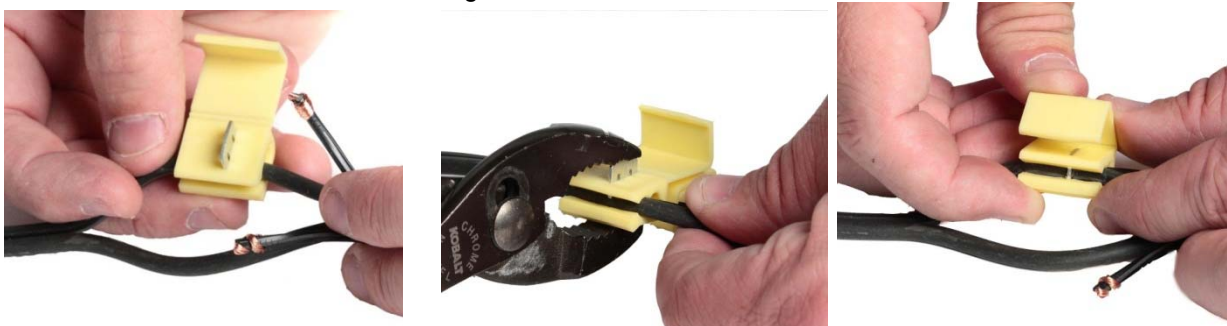
**Note: Depending on fan type, there are different types of fan connector wires. Fan information will indicate which jack is to be used. If you are using different types of fans with two different wire connectors, they will be labeled.**

For fans using 2.1mm Connector Jack:

- a. Take your negative (-) wire (with the grooves) on low voltage cable and insert into the banana clip so that it goes completely through the clip. Then take the fan wire and take the cable with the white on it and insert into the banana clip so that it is on the side that goes halfway through. Take pliers to push the metal down into the wire. Then close up the cover on the clip.
- b. Take the positive (+) wire (with the markings ----) on low voltage cable and repeat the same step as (a) using the fan wire cable that does not have the white on it

For fans using 2.5mm Connector Jack:

- a. Take your negative (-) wire (with the grooves) on low voltage cable and insert into the banana clip so that it goes completely through the clip. Then take the fan wire and take the cable that is smooth and insert into the banana clip so that it is on the side that goes halfway through. Take pliers to push the metal down into the wire. Then close up the cover on the clip.
- b. Take the positive (+) wire (with the markings ----) on low voltage cable and repeat the same step as (a) using the fan wire cable that has the groove on it



7. Plug the coax cable from the fan wire into the jack on the back of the DC fan



8. Repeat steps 4 through 7 for each fan.
9. Test the fans to make sure that they are all working properly.

---

### LIMITED THREE-YEAR WARRANTY

When installed, operated, used and maintained as intended in residential applications and according to the instructions supplied with ATMOX products, ATMOX warrants its products for a period of 3-years from the date of purchase against any defects in material and workmanship. The products covered by this warranty include the control boxes, fans, sensors and wiring manufactured by ATMOX. ATMOX will repair or replace, at ATMOX's option, any ATMOX product or component found to be defective within the 3-year warranty period.

ATMOX products are designed to improve conditions in the crawlspace, basement or attic, yet are limited by atmospheric and natural conditions over which ATMOX has no control and which are not covered by this warranty. ATMOX products are not warranted against damage caused by electrical surges, fire or other casualty, vandalism, or acts of God (including lightning strikes and floods). This warranty does not make representations regarding mold, insects, termites, water, rot, electrical, HVAC, roof, framing, foundation, floors, drywall, gutters, ice dams or other problems that may occur in a house structure. The warranty does not include any costs of removal or reinstallation.

Third-party products by other manufacturers sold by ATMOX (such as dehumidifiers) are not covered by this warranty but may be covered under separate warranties by the product's manufacturer. Purchaser should contact third party manufacturers for warranty claims and coverage of third-party products not manufactured by ATMOX.

ATMOX INC'S LIABILITY UNDER THIS LIMITED WARRANTY IS STRICTLY LIMITED TO REPAIR OR REPLACEMENT OF DEFECTIVE ATMOX PRODUCTS. OTHER THAN THE WARRANTIES EXPRESSLY DESCRIBED HEREIN, ATMOX DISCLAIMS ALL OTHER WARRANTIES, EXPRESS OR IMPLIED, INCLUDING BUT NOT LIMITED TO ANY WARRANTIES OF MERCHANTABILITY OR FITNESS FOR A PARTICULAR PURPOSE. ATMOX WILL NOT BE LIABLE FOR ANY SPECIAL, INCIDENTAL OR CONSEQUENTIAL DAMAGES.

Some states do not allow certain limitations and exclusions of warranty, so these exclusions may not apply to you. This warranty gives you specific legal rights, and you may also have other rights, which vary from state to state.

---

### Contact Information and to Obtain Warranty Coverage

ATMOX INC  
10612-D Providence Road #229  
Charlotte, NC 28277

Phone: (704) 248-2858  
Fax: (704) 675-9858

Website: [www.atmox.com](http://www.atmox.com)  
Email: [info@atmox.com](mailto:info@atmox.com)

---