

## PRODUCT SPECIFICATIONS & INSTALLATION INFORMATION

### 09-110843 Louvered Plate 6" - Brown

#### Specifications:

- Mounting: Fits multi-mount plate.  
Attaches with 4 screws (included)
- Use: Designed for Exhaust Multi-Mount Fan only



Front & Back View

#### Tools needed for Installation:

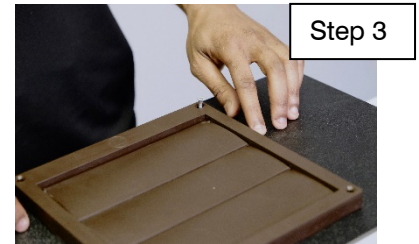
- Philips-Head Screwdriver

#### Installation Steps:

1. Follow instructions on the Spec Sheet for Multi-Mount Fan to attach fan to the mounting plate.
2. Insert the louvered plate inside the fan opening. Note the orientation of the louvers to the top of the fan.
3. Turn the plate so that louvered plate is on top and make plate level and straight.
4. Insert 1 supplied screw into corner hole of louvered plate. Use screwdriver to screw/drill directly into the plastic.
5. Repeat Step 4 for all four corners.



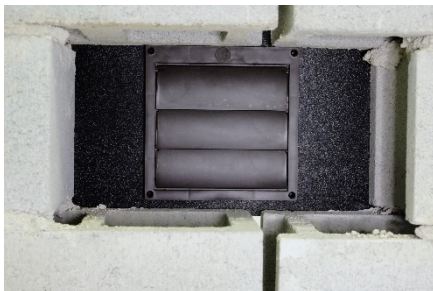
Step 2



Step 3



Step 4



Note: When using louvered plate, crawlspace vent opening must be 8 inches in height. When you are ready to mount on wall in crawlspace opening, insert louver into opening so that plate is flush with the wall. Follow instructions on the Spec Sheet for Multi-Mount Plates regarding mounting plates to the wall.

*Example of view of the Exhaust Fan from outside the crawlspace without an exterior grill in place.*

#### ATMOX INC

10612-D Providence Road #229  
Charlotte, NC 28277

Phone: 704.248.2858  
Fax: 704.675.9858

Website: [www.atmox.com](http://www.atmox.com)  
Email: [info@atmox.com](mailto:info@atmox.com)