



Front & Back View

SPECIFICATIONS

ATMOX EXHAUST FAN – MULTI-MOUNT WITH LOUVER 01-380-600L

Output:	225 CFM
Nominal:	1.1A at 12V DC
Usage:	15 Watts
Noise:	49 dB
Power:	2.1mm Jack (Center Negative)
Mount:	Plate (10 x 22 inches) mounts from inside crawl space or attic.
Louver:	Optional Louver attaches to plate.

POWER OPTIONS



Fan Connector Wire with Quick Splice Connectors (Included)
Reference the Installation Guide for low voltage wiring instructions. Jack plugs directly into fan.



12V AC Adapter (Sold separately – Item: 01-175-032)
For use in standard electrical outlet within 6 feet of fan. Fan will run continuously. Jack plugs directly into fan.

LIMITED THREE-YEAR WARRANTY

When installed, operated, used and maintained as intended in residential applications and according to the instructions supplied with ATMOX products, ATMOX warrants its products for a period of 3-years from the date of purchase against any defects in material and workmanship. The products covered by this warranty include the control boxes, fans, sensors and wiring manufactured by ATMOX. ATMOX will repair or replace, at ATMOX's option, any ATMOX product or component found to be defective within the 3-year warranty period.

ATMOX products are designed to improve conditions in the crawlspace, basement or attic, yet are limited by atmospheric and natural conditions over which ATMOX has no control and which are not covered by this warranty. ATMOX products are not warranted against damage caused by electrical surges, fire or other casualty, vandalism, or acts of God (including lightning strikes and floods). This warranty does not make representations regarding mold, insects, termites, water, rot, electrical, HVAC, roof, framing, foundation, floors, drywall, gutters, ice dams or other problems that may occur in a house structure. The warranty does not include any costs of removal or reinstallation.

Third-party products by other manufacturers sold by ATMOX (such as dehumidifiers) are not covered by this warranty but may be covered under separate warranties by the product's manufacturer. Purchaser should contact third party manufacturers for warranty claims and coverage of third-party products not manufactured by ATMOX.

ATMOX INC'S LIABILITY UNDER THIS LIMITED WARRANTY IS STRICTLY LIMITED TO REPAIR OR REPLACEMENT OF DEFECTIVE ATMOX PRODUCTS. OTHER THAN THE WARRANTIES EXPRESSLY DESCRIBED HEREIN, ATMOX DISCLAIMS ALL OTHER WARRANTIES, EXPRESS OR IMPLIED, INCLUDING BUT NOT LIMITED TO ANY WARRANTIES OF MERCHANTABILITY OR FITNESS FOR A PARTICULAR PURPOSE. ATMOX WILL NOT BE LIABLE FOR ANY SPECIAL, INCIDENTAL OR CONSEQUENTIAL DAMAGES.

Some states do not allow certain limitations and exclusions of warranty, so these exclusions may not apply to you. This warranty gives you specific legal rights, and you may also have other rights, which vary from state to state.

WARNING: Cancer and Reproductive Harm – For more information, go to www.P65Warnings.ca.gov



10612-D Providence Road. #229, Charlotte, NC 28277 • 704-248-2858 • www.atmox.com

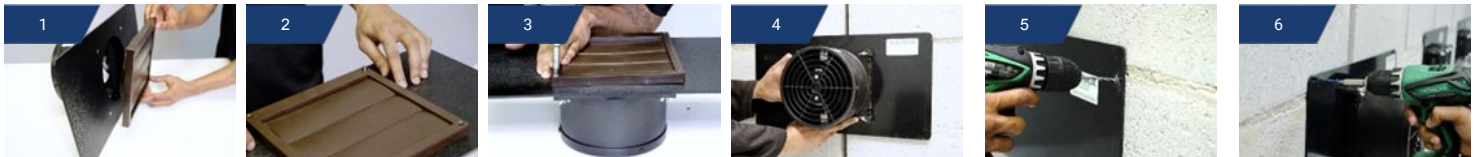
INSTALLATION INFORMATION

Tools Needed for Installation:

- Drill(s) (Note: Two drills will avoid the need to switch drill bits while in crawl space or attic.)
- Masonry screw kit (i.e. masonry screws and drill bit for concrete/masonry)
- Drill bit for screws selected.

Installation Steps for Wall Mount (if louver is not being used, begin with Step 4):

1. Insert the louvered plate inside the fan opening. Note the orientation of the louvers to the top of the fan.
2. Turn the plate so that louvered plate is on top and make plate level and straight.
3. Insert a supplied screw into corner hole of louvered plate. Use screwdriver to screw/drill directly into mount plate. Repeat for all four corners.
4. Plate will be mounted to wall from inside the crawlspace or attic. Align the plate to cover the opening.
5. Permanently secure to the wall with 2 to 4 screws. Drill into the top corner of the plate through plastic and into wall using masonry drill bit. (Note: If mounting to brick, it is best to drill into mortar between the brick. If mounting to cinder block, you can drill into mortar or directly into cinder block.)
6. Hold the plate in place and then insert masonry screw and tighten the screw with drill. Repeat steps for drilling, inserting screws and tightening.
7. Fan is ready for power connection.



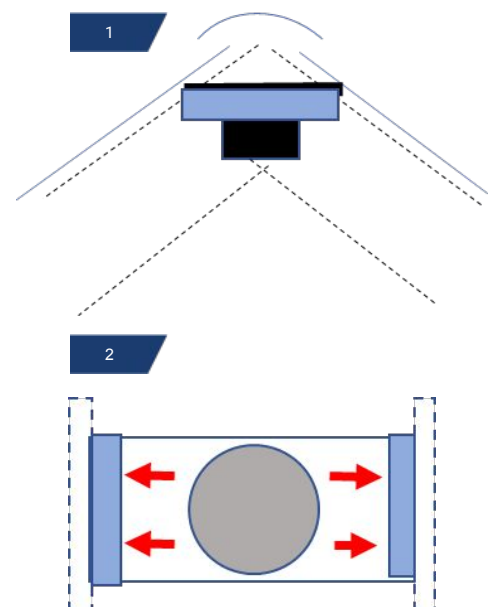
INSTALLATION INFORMATION

Tools Needed for Installation:

- Drill/screwdriver
- Circular saw (if needed)
- Screws selected for mounting
- 2x4" wood pieces

Installation Steps for Use in Ridge Vent or Roof Opening (Without Louver):

1. Plate will be mounted directly underneath open ridge vent or opening between rafters. Cut plate to size if needed.
2. Place two wood blocks directly against rafters allowing plate to rest on blocks. Screw wood to rafters.
3. To get a better seal for airflow, caulk around perimeter of the plate. Seal any gaps to the left or right of the fan.
4. Fan is ready for power connection.



If fan is mounted without the louver, it should be mounted behind an existing grill or vent. **If the fan is installed in an open location where fan motor is accessible, a grill or louver must be installed.**